

ROMANS 12:5

## OUR MISSION

BISHOP CHATARD HIGH SCHOOL, a dynamic educational environment for young men and women with different life experiences, is directed to the success of each student, focused on the growth of the whole person, and modeled on the teachings of Jesus Christ and the Catholic Church.

Bishop Chatard High School prepares students for a life-long commitment to faith, learning, leadership and service.



2021-2022  
ANNUAL  
REPORT







**BILL SAHM**  
President

## Dear Trojan Supporters,

The 2021/2022 school year was challenging yet incredibly fruitful, as our faculty, staff and especially students rallied from the harshest effects of the pandemic to accomplish the lofty goals to which we continue to aspire. Following are statistics that support this claim:

- 83% of the Class of 2022 graduated from Bishop Chatard with college credit earned through either AP or Dual Credit classes. The average number of college credits earned by students taking these classes was 10.75.
- 14 graduates earned Summa Cum Laude distinction in 2022.
- 63% of graduates earned Academic Honors Diplomas.
- The class of 2022 earned more than \$28.2 million in college scholarships, averaging nearly \$181,200 per graduating senior.
- Diploma Strength as indicated by the Indiana Department of Education for Bishop Chatard is 99%, compared to the state average of 79.1%.
- During the 2021-2022 school year, 60 upperclassmen served as retreat team leaders.
- Over 90% of students voluntarily participated in their annual class retreat.
- Approximately 11,000 service hours were completed by students.
- 86% of students participated in extracurriculars.
- The average GPA for students who participated in four extracurriculars was 4.0. It was 4.2 for those who participated in six or more extracurriculars.
- 235 students served as school ambassadors.
- 69% of students participated in athletics.
- 124 student-athletes were named Academic All-State 1st Team or Honorable Mention; 13 student-athletes were named Academic All-American.

On the capital improvement front, we were able to accomplish much this past year. Many of the projects started in 2021-2022 have been completed or are near completion.

### PROJECTS COMPLETED IN 2021-2022

- We purchased two new student transportation buses which are used for extracurricular activities.
- We installed new lighting and sound system in the auxiliary gym.
- The school security system was expanded and upgraded, including the addition of several new cameras.
- We added a grotto dedicated to Our Lady Queen of Peace, located in front of the St. Benedict Center.
- The cafeteria was refreshed including all new integrated tables and booths.
- We completed the installation of all new windows and the wrestling room project in the St. Benedict Center.
- We were able to outfit four classrooms with new student furniture.

### PROJECTS STARTED IN THE 2021-2022 FISCAL YEAR THAT WERE EITHER COMPLETED OR ARE NEAR COMPLETION

- The main gym has new bleachers, a large display panel and new team accomplishment and state championship banners.
- We have added office spaces to accommodate athletic and finance departments' needs.
- We are close to completing a pavilion that is located between the main school building and the softball field.
- We relocated and updated the Spirit Shop.



Always with an eye to the future, we developed, with representatives from all our stakeholder groups and approval by the Board of Regents, a Strategic Plan for the 2022 – 2025 school years. The goals are as follows. (You can find the accompanying action steps on the BCHS website.)

**GOAL 1**

To increase the number of minority professional staff and ensure the quality of all minority students' experience.

**GOAL 2**

To review, update and more thoroughly implement the Catholic Educator Advancement Program (CEAP), including professional development, and increase the CEAP scale in order to remain competitive with high schools in the Bishop Chatard catchment area. CEAP is the name given to our merit-based performance assessment and compensation program for faculty.

**GOAL 3**

To review, update and implement a 3-year marketing for enrollment plan with particular focus on North Deanery outreach. This goal includes receiving archdiocesan approval for conducting a capital campaign to build a performing arts center that will serve both Bishop Chatard and all the North Deanery parishes.

Finally, in the 2021-2022 fiscal year, we were able to raise \$1.9 million dollars through all of our annual fund efforts. These funds are primarily used for tuition assistance and teacher compensation. This accomplishment is especially important to the 55% of our students who depend on our financial assistance and in support of our outstanding faculty.

May God continue to bless all members of the Bishop Chatard community as together we strive to live out our mission to the benefit of our beloved students and their families.

God bless you,



**Bill Sahm**  
President

**2021-2022 ADMINISTRATION**

**BILL SAHM**  
President

**J.T. FUNK '01**  
Vice President of  
Institutional Advancement

**JOE HANSEN**  
Principal

**ANN TAYLOR**  
Vice Principal of Academics

**BEN REILLY**  
Vice Principal

**MIKE FORD '76**  
Director of Athletics

**CHRISTA WYNK**  
Executive Director of Finance

**LIBBIE STEINER**  
Executive Director of  
Mission Integration

**VINCE LORENZANO**  
Dean of Students/Director  
of Safety & Wellness

**BETH BROGAN '86**  
Director of Academic Support

**KELLY LUCAS**  
Executive Director of Marketing  
& Communication

**MARGARET RUFFING**  
Executive Director of  
Development

**KAREN ARUTA**  
Enrollment Manager

**ANNE HOMAN '06**  
Director of Alumni Relations

**2021-2022 BOARD OF REGENTS**

**ROB SHUMAKER**  
Chair

**EILEEN COUNTRYMAN '90**  
Vice Chair

**LIZ SOWINSKI**  
Secretary

**FATHER DOUG MARCOTTE**  
North Deanery Dean

**BILL SAHM**  
President

**MARK BRIDENSTINE '89**

**MIKE BORCHERS**

**TONY FELTS**

**PAM FOX**

**KRISTI GAYNOR**

**JEFF GOOD**

**LAURA MATES**

**ERIKA REDMOND**

**PAULA RYAN**

**ALY SCHROEDER**

**JIM STEHLIK**

**TODD SURINAK**

**CATHERINE (BATES) WATERS '08**

Bishop Chatard High School, the North Deanery high school of the Archdiocese of Indianapolis, gratefully acknowledges the spiritual and financial support of the Archdiocese of Indianapolis, the North Deanery parishes, and our pastors and priests.

**THE NORTH DEANERY PARISHES OF THE ARCHDIOCESE OF INDIANAPOLIS**

CHRIST THE KING  
IMMACULATE HEART OF MARY  
SAINT ANDREW THE APOSTLE  
SAINT JOAN OF ARC  
SAINT LAWRENCE

SAINT LUKE THE EVANGELIST  
SAINT MATTHEW THE APOSTLE  
SAINT PIUS X  
SAINT SIMON THE APOSTLE  
SAINT THOMAS AQUINAS



# ON THE Red Carpet

CHATARD-A-BRATION  
2022

With the help of our generous sponsors, our dedicated committee chairs, and an outstanding core of volunteers, Chatard-a-Bratton was a huge success, raising \$323,000 for tuition assistance and to better care for our teachers! Our community from near and far participated in the auction with open hearts (and wallets)! 500 guests attended the event with great enthusiasm and the evening was even more enhanced when the dance floor opened up with The Bishops entertaining, creating a wonderful experience for everyone.

A heartfelt thank you to our Chatard-a-Bratton chairs Steve Koers and Sharea Clark, our exceptional auction and logistics committees who brought a creative and bountiful auction, and our masters of ceremonies, Pam Nixon and Ben Reilly who brought their infamous humor and energy to the evening.

Additionally, a successful Fund-a-Need for new gymnasium bleachers put us in a position to start the process and, at this writing, the bleachers are in! The Trojan motifs down the center of the bleachers let everyone know just whose house they have walked into. Thank you to all that made the new bleachers possible! Go Trojans, and God bless this Bishop Chatard Community.



THANK YOU TO  
OUR 2022  
SPONSORS

ALL EVENT  
PREMIERE SPONSORS



ALL EVENT  
TROJAN SPONSOR

**FORV/S**

ROYAL SPONSORS



WHITE SPONSORS



PATRON SPONSORS

STEVE KOERS, JOHN H. LEWIS, AND PAUL MULLIN '97 OF LEWIS & WILKINS LAW FIRM

PORCH LIGHT PUBLIC RELATIONS

LEPPERT MORTUARIES

HALL, RENDER, KILLIAN, HEATH & LYMAN, P.C.



# 2021 BISHOP CHATARD HIGH SCHOOL ACHIEVEMENT AWARDS



The Achievement Award is the highest honor given by Bishop Chatard High School. The award recognizes individuals who selflessly serve and support the Archdiocese of Indianapolis North Deanery high school and its students. This annual award celebrates the generosity, kindness and support that surround and bless Bishop Chatard High School.

Individuals who epitomize the Catholic mission and values of Bishop Chatard are nominated by the community and recognized at the high school's Annual Fund Dinner. We congratulate our 2021 Achievement Award honorees.

## ANNUAL FUND DINNER & ACHIEVEMENT AWARDS

2021

CELEBRATING  
60 YEARS  
OF CATHOLIC  
EDUCATION



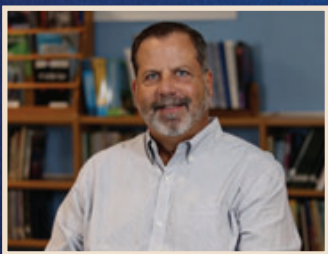
OUTSTANDING  
ALUMNI HONOREE

**Mike Leppert '65**



OUTSTANDING  
FACULTY HONOREE

**Pam Nixon**



OUTSTANDING  
COMMUNITY SERVICE  
HONOREE

**James Babcock, Inc.  
Dan Babcock**



OUTSTANDING  
VOLUNTEER  
HONOREES

**Scott & Cathy  
Nickerson**





## BALANCE SHEET ITEMS

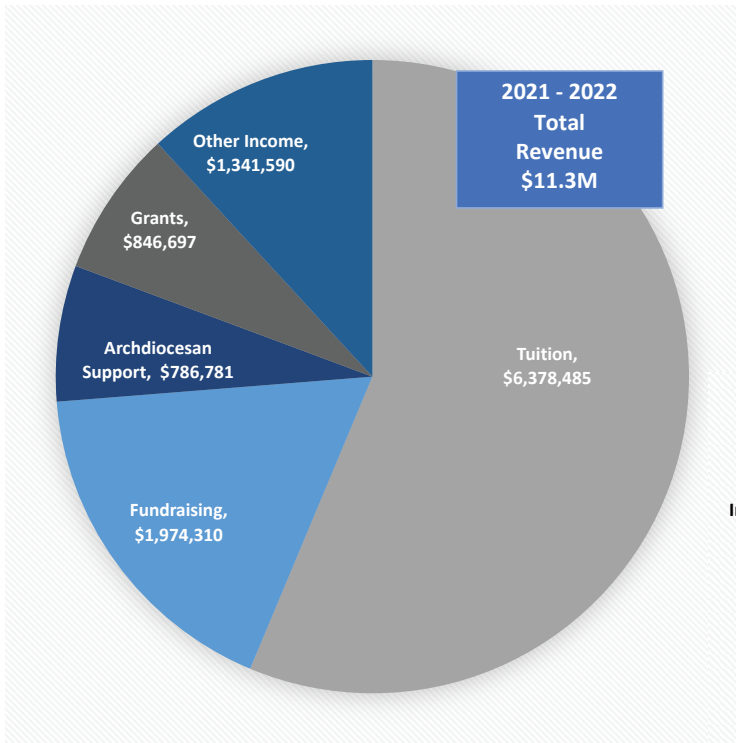
ASSETS	
Cash	1,449,721
Tuition Receivables	8,980
Capital Campaign Receivables	298,732
Other Current Assets	258,412
Property & Equipment	6,521,121
Endowment	1,516,942
	<b>\$10,053,908</b>

LIABILITIES	
Accounts Payable	363,557
Accrued Salaries	235,233
Deferred Revenue	226,157
Notes Payable	- *
Other Current Liabilities	129,314
	<b>\$954,261 **</b>

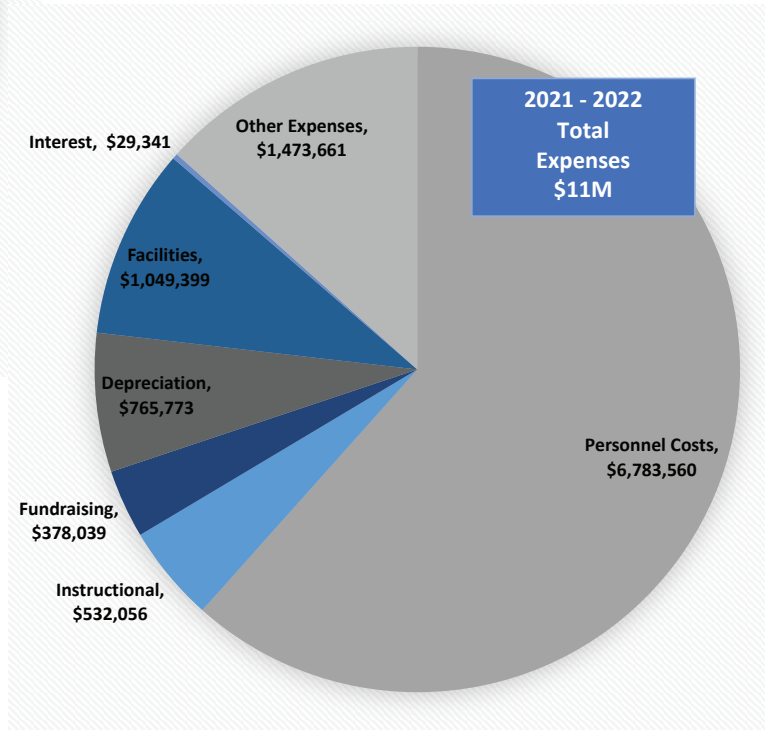
\* The Notes payable was paid in full in January 2022. Over the last decade, BCHS has completed 3 major campus expansions, totaling \$12 million.

\*\* To complete the balance sheet, Net Assets equal \$9,099,647. Of those, \$883,333 were restricted by program, the remaining amount is either endowed or unrestricted.

## 2021-2022 INCOME/EXPENSE ACTIVITY NET SURPLUS = \$316K



\* \$534k was EANS Grant used in FY22 with additional \$519k for FY23





**TRANSPORTATION ACQUISITION****\$46,000**

Bishop Chatard purchased two additional buses in 2021-2022. One replaced a vehicle taken out of use, and the second added to the school's fleet to enhance its ability to transport students. A fenced area was also created to secure the school's transportation assets.

**GROTTO CREATED****\$55,000**

A grotto, located on the southwest corner of the BCHS campus in front of the St. Benedict Center, was completed as a space where students, teachers and school groups can visit for prayer and adoration. The grotto is a visual reminder that the successes Bishop Chatard has with its students are by the grace of God and Mary's intercession. It was made possible by a generous donation.

**NEW CAFETERIA & CLASSROOM FURNITURE****\$145,500**

Existing furniture was replaced in the school cafeteria and five classrooms in summer 2022 using EANS grant funds. In the cafeteria, tables with fixed seating improve cleaning and efficiency of movement. Alternative seating that includes round, horizontal and booth table/chair combinations creates a conversational setting. Desks purchased for classrooms replaced furniture that was end-of-life while also accommodating increased school enrollment. The modernization of classrooms creates more collaborative learning environments.

**UPDATES TO AUXILIARY GYM****\$55,500**

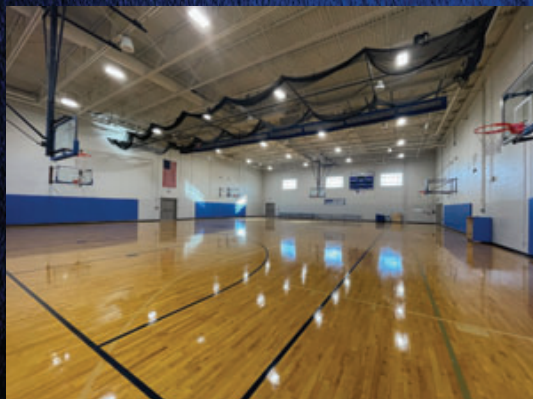
Aesthetics were improved in Bishop Chatard's auxiliary gym with the purchase of new lights and speakers in 2021-2022. Additional storage space for athletic equipment was also added.

**NEW CAMPUS SECURITY CAMERAS****\$30,000**

Bishop Chatard updated existing security cameras and added new digital equipment near building access points and in the school parking lot to enhance safety and security on campus. Funding was provided by a SSSG Grant.



# 2021 - 2022 CAPITAL IMPROVEMENTS





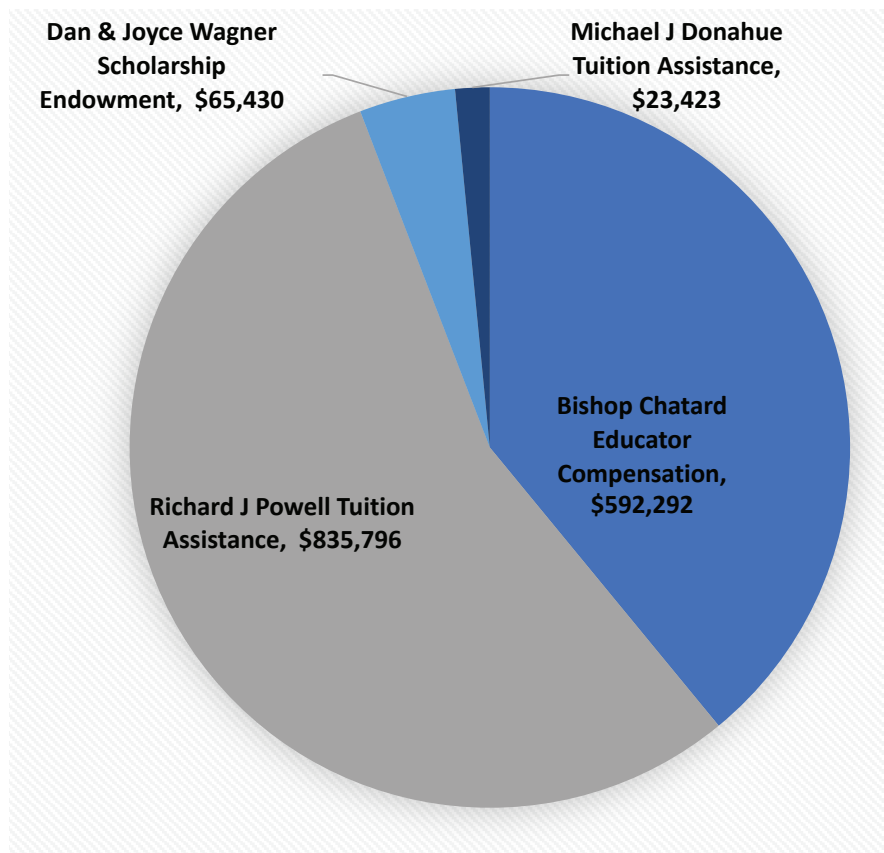
## ENDOWMENTS FY22

On average, Bishop Chatard receives and budgets for a 5% distribution from its endowments. All gains in excess of the 5% are reinvested year over year.

Unfortunately, for 2021-2022, the endowments experienced a loss of approximately 13% based on market changes. Many investment portfolios averaged losses of 20-25% during this same time period.

In 2021-2022, Bishop Chatard realized distributions of \$30,570 from the Educator Compensation Endowment. These are a portion of the funding that pay for teachers' merit-based raises within our Catholic Educators Assessment Program (CEAP)

The Tuition Assistance Endowments distributed \$44,699 which is part of the over \$850,000 given out in financial aid for the 2021-2022 school year.



NAME	BEGINNING BALANCE	DISTRIBUTIONS	FEES	GAINS (LOSSES)	END BALANCE
BISHOP CHATARD EDUCATOR COMPENSATION	715,459.70	(30,569.84)	(7,076.25)	(85,521.69)	\$592,292
RICHARD J POWELL TUITION ASSISTANCE	1,009,892.64	(43,453.96)	(9,958.92)	(120,683.63)	\$835,796
DAN & JOYCE WAGNER SCHOLARSHIP ENDOWMENT					\$65,430
MICHAEL J DONAHUE TUITION ASSISTANCE	28,330.96	(1,245.05)	(280.35)	(3,382.27)	\$23,423
	<b>1,753,683.30</b>	<b>(75,268.85)</b>	<b>(17,315.52)</b>	<b>(209,587.59)</b>	<b>1,516,941.68</b>
		-4.29%	-0.99%	-11.95%	86.5%



## WAYS TO GIVE

Your gift to Bishop Chatard High School will play a vital role in the continuation of the North Deanery high school's mission to prepare its students for a life-long commitment to faith, learning, leadership, and service. To read more about the different ways you can provide support, visit [www.BishopChatard.org/giving/ways-to-give/](http://www.BishopChatard.org/giving/ways-to-give/).

All BCHS parents are members of our parent organization, the Trinity Club, and are encouraged to become involved. Learn more at [www.BishopChatard.org/parents/trinity-parent-club/](http://www.BishopChatard.org/parents/trinity-parent-club/).

## EVENTS AT BISHOP CHATARD

The Bishop Chatard Office of Institutional Advancement hosts a number of activities and initiatives throughout the year to drive enrollment, engage alumni and garner financial support. Among these are the Annual Fund Drive, Open house, Chatard-A-Bration, Christmas on Crittenden and more. In recent years, many of these events, including our Golf Outing, have been sell outs! Information on current events and how to participate can be found at [www.BishopChatard.org](http://www.BishopChatard.org).

### ANNUAL FUND DINNER

**DOLLARS RAISED: \$777,886**

**ATTENDANCE: 541**

### GOLF OUTING

**DOLLARS RAISED: \$59,370**

**ATTENDANCE: 144**

### CHATARD-A-BRATION

**DOLLARS RAISED: \$323,302**

**ATTENDANCE: 481**

### WALK-A-THON

**DOLLARS RAISED: \$28,816**

### DAY OF GIVING

**DOLLARS RAISED: 50,026**





# AWARDS & ACCREDITATIONS



## ACCREDITATION

Bishop Chatard High School, as part of the Archdiocese of Indianapolis, has met the criteria for educational quality established by Cognia Global Commission. BCHS has received its Certificate of Accreditation by the North Central Association Commission on Accreditation and School Improvement, the Northwest Accreditation Commission, and the Southern Association of Colleges and Schools Council on Accreditation and School Improvement.



## 2019 THRIVING SCHOOL

Bishop Chatard was nominated and awarded the honor of being named a 2019 Indianapolis Thriving School. Funding through this award will provide BCHS with a composting service by local company, Green with Indy. The entire program is a part of a larger initiative, Thrive Indy, from the City of Indianapolis and Mayor Joe Hogsett.



Letter Grade  
by the  
Indiana  
Dept. of  
Education

## 2020 'A' LETTER GRADE

Bishop Chatard has consistently earned a school accountability letter grade of 'A' from the Indiana Department of Education. In December 2020, the IDOE announced that BCHS received top marks for student performance during the 2019-2020 school year. Indiana's A-F Accountability Model holds schools and corporations to a higher standard and provides a more accurate picture of their performance by incorporating student academic growth and graduation rates, as well as college and career readiness, as measures of success. (2019-2020 is the most recent school year for which IDOE letter grades were issued.)



## 2021 BEST SCHOOL

Bishop Chatard has been named as one of the 2021 Best Schools by Niche.com, giving it an A rating. Niche is among the leading online review websites for schools throughout the United States. It researches K-12 schools and colleges to rate and rank schools. Only 10 percent of schools nationwide receive an A or higher from Niche.



## ADVANCED PLACEMENT AWARD

Bishop Chatard High School has been recognized by the Indiana Department of Education for exemplary performance on Advanced Placement exams. 49.1% of the Class of 2019 received a 3 or higher on at least one AP exam, translating into \$71,928 postsecondary dollars saved. That percentage increased to 58.46% for the Class of 2020, translating into \$101,232 postsecondary dollars saved. (The Class of 2020 is the most recent class year for which IDOE awards were issued.)





# DONOR WALL BY AMOUNT

## \$10,000+

Steve & Helen Ahlfeld  
Anonymous (10)  
Benefit Solutions US, LLC -  
Christine Zweber Konvolinka  
James '70 & Doris Brogan  
Dan & Betsy Brunette  
Aaron & Jennifer Dixon  
The Duffy Family  
Daniel '83 & Amy (Eck) '84 Fillenwarth  
DR & Cherie Foley  
FORIVS  
Steve & Kari Guymon  
Ken & Barb Kern  
Charlie McCormick  
Mike & Heather McGinley  
Scott & Cathy Nickerson  
Joel & Mary O'Brien  
Tayt & Cori Odom  
Printing Partners Inc.  
Rob & Julie (Church) '88 Pruitt  
Derek Redelman  
Bill '84 & Susan (Hunsicker) '84 Ripberger  
Dave Schapker & Michelle (Jentz) '86 Haimbaugh  
Todd & Shannon Shaw  
Sullivan Hardware - Pat '78 &  
Beth (Ansty) '78 Sullivan  
Andy & Carmen Teed  
Eugene & Edith Witchger  
Jim & Rita Zink

## \$5,000 - \$9,999

Anonymous (6)  
Dan & Betsy Babcock & Family  
Dave & Ann Babcock  
Patrick & Julia Brazill  
Rick Brodfuehrer & Karen (Dugan) '74  
Pappas-Brodfuehrer  
Michael & Sylvia Brunette  
Peter & Sarah Bustamante  
Jim & Kathie Church  
Brad & Eileen (Powell) '90 Countryman  
Jim Deitchman '79  
Leslie Deitchman  
Distinct Images Inc  
Kevin & Lisa Doyle  
Rob & Libby (Akin) '78 Doyle  
The Drew Family  
ECO Parking Technologies

Jonathan Evans  
Edward & Jeanne Guntz  
Mark '87 & Alice Hannon  
Buddy '69 & Martha Hennessey  
Jim & Carol Joven  
Kennedy Tank & Manufacturing Company -  
Bill '08 & Ellen (Alerding) '08 Kennedy,  
Jimmy '08 and Anna Grace Kennedy, Maura  
Kennedy '05, Patrick Kennedy '09, Cheryl  
Kennedy, Paul & Ann Bolin, Courtney Bolin,  
Kevin Bolin, Brian Bolin, Thom & Kathy  
Fairchild, Justin & Kimmie (Fairchild) '04 Rumer,  
Kyle '04 and Anna Fairchild, Mark & Peggy  
Shorter, Matt & Kelly Scheidler, Mickey &  
Ashley Shorter

Bryon & Christine Konvolinka  
Pat & Virginia Maher  
Tim & Sheila (Kenney) '86 McNelis  
Terry '84 & Laura O'Brien  
The Michael F & Jody J Petrie Foundation, Inc.  
Jeff & Aileen Puno  
The Reed Family  
Steve & Debbie Ruberg  
John Scheidler '72  
Bill '76 & Cokie (O'Brien) '75 Scheidler  
Scott & Leslie Schrader  
Tom & Amy Schulte  
Rex & Melissa St John  
Jim & Kelly (Desautels) '91 Stehlik  
Greg '88 & Carol Stephens  
Ed & Trina Stonner  
Vince & Sue Todd  
Max Van Vliet '12  
Gregg & Cindy Wallander  
Bud & Martha Watts  
Paul '79 & Mary (Sullivan) '81 Weaver  
Scott Wenclewicz '02  
Nick Weybright  
John & Lori Zehner

## \$2,500 - \$4,999

Allied Automation  
Joe & Jenny Annee  
Anonymous (7)  
Apex Benefits Group, Inc.  
Michael & Mary Ellen Ball  
Daniel & Shannon Bayha Family  
Joe & Suzanne Benjamin  
Joe & Laurie (Huffine) '75 Breen  
Tony & Amy Bultinck  
Catholic Youth Organization  
Church Church Hittle + Antrim

Sharea Clark  
Bruce & Jeanne (Lynch) '70 Conner  
Danco Roofing Services, Inc.  
Gary & Sandy deCastro  
Brian & Nicole Duncan  
Mike '03 & Carly (Mattingly) '05 Dury  
Jack Esselman  
Katie (Sullivan) '87 Evans  
Fikes Fresh Brand  
Fitness 4 Function  
Flanner Buchanan & Catholic Cemeteries  
Association- Maureen O'Hara '81 &  
Mark McCrocklin '80  
Bob Bates & Sheila Gamache  
John Gary Hoefle  
Brad & Katie Horton  
Huntington Bank  
Ice Miller LLP  
Innovatemap, LLC  
Katz, Sapper and Miller  
Dale & Maria Knight  
Kyle J. Guyton Memorial Scholarship Fund  
George & Melanie Lauck  
Marian, Inc.  
Mick '90 & Laura Mates  
Rich & Mary McGillicuddy  
McGowan Insurance Group  
Jack & Candice Mees  
Merchants Bank of Indiana  
Merchants Capital  
Pat '90 & Deanna Murphy  
Steve & Kathleen Noone  
Northside Events & Social Club  
O'Brien Automotive Family  
David & Katherine O'Connell  
Drew & Adriana Ratterman  
John '91 & Paula Ryan  
Bill & Debbie Sahn  
Trent & Jill Sandifur  
John & Kim Shaw  
Shiel Sexton  
Dave '89 & Paula (Feist) '89 Smith  
Smith Family Realty  
Mark & Kathy Stephens  
Dave & Ann Taylor  
Tendercare Home Health Services, Inc.  
Scott & Amy Treida  
Tyler Automotive  
Pat Zimmerman '02  
Jennifer Zyromski



## DONOR WALL BY AMOUNT (CONTINUED)

### \$1,000 - \$2,499

ACRE Capital	Joe Ford '69	Patrick & Margo McNamee
Acuity Capital Group	Tom '74 & Diane Funk	Medasource
Tom & Sis Adkins	John & Jo Lynn (Ewing) '90 Garing	Tim & Maureen Meek
Michael & Jeanne (Capone) '82 Agostino	Coley & Kristi Gaynor	Jim & Nancy Meiner
Anonymous (7)	Dennis '68 & Jeanne Gernhardt	Eileen (O'Brien) '80 Metzger
Chris '84 & Debbie Barnes	Brian & Sallie Giudice	Pete & Laurie Meyer
Tom '75 & Kris Barnes	Todd & Mary Grote	Tom & Kathleen (O'Brien) '71 Miller
Joe & Linda Battiato	Tom & Kim Gutzwiller	Clark & Sally Millman
Bill & Jennifer Bean	Jane Hackman	John & Julie (Goebel) '88 Nagel
Kevin & Amy Beausir	Dan '85 & Carrie Hackman	June Naughton
Sean & Claire Belby	David & Caroline Hakanson	NewRez
Geoff Bjork & Carmen Hansen Rivera	Hall, Render, Killian, Heath & Lyman, P.C.	Jim & Jeanne Norton
Michael & Amy Borchers	Glenn '84 & Cindy Harkness	Larry & Nancy O'Bryan
Brent & Mandy Borg	John '65 & June Haskin	John & Barb Ockomon
Andrew & Beth Borland	Connie Heneghan	Aba & Katherine Orr
Steve Bourgeois & Kristi Dwenger-Bourgeois	Christopher & Nancy Hepp	Larry '79 & Rita Parsons
Gregory & Christina Bowers	Herff Jones, Inc.	Rob & Susan Paz
Bradley Associates	Bob & Susie (O'Connor) '80 Hill	Porch Light Public Relations
Roger & Deborah Broderick	Al & Denise Hirt	Norma Powell
Marty '02 & Lauren (Kern) '02 Brown	Hope Plumbing	Alan & Jennifer Pyrz
Tom & Jody Bruce	Joe & Emily Hummel	Kriss Anderson & Adrienne Quill
Paul & Terri Brumleve	Mike & Anne Hurley	Charlie & Julie Revard
Paul & Jennifer Burger	Indiana High School Athletic Association	John & Sharon Ryan
Ron & Angi (Froehlich) '86 Burkard	Indy College Football Playoff Inc.	Ryan Fireprotection
Mike & Kelly Caskey	Mike '81 & Beth Jansen	Andy '98 & Jessie Sahn
Tom & Toby Catalano	John H Haskin & Associates	Joe & Amy Schaffer
Courtney & Jennifer Chan	Doug '78 & Laurie Jones	John '02 & Sarah (Ball) '03 Scheidler
David & Beth Christoff	Matt & Julia (Petrie) '05 Kaercher	Rev. Tom Schliessmann '79
Joe Clark '68	Ken & Marianna Kassenbrock	Duane & Lenore Schmitz
Michael & Kimberly Cline	Cody & Jamie Kendall	Dave & Sue Schnieders
Larry & Ellen Coan	Bill '08 & Ellen (Alerding) '08 Kennedy & Family	Mike & Holly Semler
Chris '78 & Debbie Collision	Jimmy '08 and Anna Grace Kennedy	Michael & Michelle Semon
Commercial Finishing - Tim '66 and Penny (Hickel) '66 Hughes	Mike '89 & Melissa Knapp	Kevin '73 & Kate Shine
Ron & Cynthia Costello	Steve & Kathy (Sitzman) '88 Koers	Rob & Anne Shumaker
John & Colleen Dangler	Carlos Lam	David & Cathy Siler
Dauby O'Connor & Zaleski, LLC	Russ '89 & Kelli Lawrence	Daniel & Anita Smith
Joseph '02 & Laura (Sheehan) '02 DiSalvo	John & Joy Leppert	Kevin & Liz Sowinski
DMA, Inc.	Leppert Mortuaries	Ben '93 & Courtney (Lorch) '97 Spiegel
Jim & Dori Dodson	Steve Koers, John H. Lewis, and Paul Mullin '97 of Lewis & Wilkins Law Firm	Jeff & Carmen Stickel
George '83 & Theresa Dury	Mark '91 & Meg Linden	Scott & Debbie Stiffler
Nannette Eckert '75	Keith & Melanie Loiselle	Sumco
EPIC Insurance Midwest, Peter Forsee '85 and John Sahn '85	Jane Lubbers	Todd & Erin Surinak
Danny & Jennifer Feeney	Andy & Jill Manchir	Shawn & Noelle Szydyk
Tony & Kirsten Felts	Martin Dentistry - Dr. Matthew Martin and Dr. Stephanie Martin	Kathy (Barnes) '79 Tekulve
Matthew & Amy Fix	Pat & Debbie Mastrian	Eric & Kari Townsend
John & Rebecca Flanigan	Marty '93 & Michelle (Linden) '94 Mates	The Trowbridge company, Inc., Ronald Trowbridge '67
Brett & Colleen Flora	Mike & Melissa Mates	Bill & Joanna Tuohy
	Mark & Jessica McAllister	Msgr. Tony Volz '75
	Kevin & Susan (Roesch) '68 McDowell	The Watermark Group
		Tony & Carole Watt



Adam & Meri Weber  
Wenclewicz Insurance LLC, Mark Wenclewicz '98  
Jim & Victoria Zink  
Brian & Jeannie Zurawski

**\$500 - \$999**

Adam & Stephanie Adler  
Rob Albright  
John & Suzanna Annakin  
Anonymous (8)  
Bryan & Gina Ashley  
Mike & Patricia Bates  
Pete Schroedle & Jacquie Berry-Schroedle  
Jerry & Diane Board  
Shannon & Heather Bosley  
Mark '89 & Amy Bridenstine  
Terry '88 & Beth Brogan  
Ed & Emily Brown  
Jason & Jennifer Bruce  
David & Carol (Qualters) '83 Burchard  
Karole (Fagan) '66 Butz  
Keith '97 & Deborah Carroll  
Sarah (Shirley) Chasnoff '78  
Chris & Celeste Collier  
Rod & Janet (Steinfeld) '65 Corson  
John & Molly Creamer  
Creamer, Elson & O'Brien Realtors  
Kevin Curtis '82  
Phillip '76 & Mary Dall  
Andy & Chanda Deck  
Kyle Deitchman '04  
Chris (Cutshall) '78 Diana  
Brian & Sarah Dilts  
Mary Donnelly  
Scott & Erin Dorsey  
John '76 & Nancy (Akin) '76 Dury  
Josef Eisgruber '17  
Kurt & Sid Eisgruber  
Lucy Eisgruber '15  
Oskar Eisgruber '19  
Jo Ann Ewing  
Kyle '04 and Anna Fairchild  
Tim Farney '79  
Charles '76 & Karen Feeney  
Michael & Kristin Felts  
Joseph & Missy Fisher  
Peter '85 & Jenny Forsee  
Steve & Cathe (Sherlock) '67 Fulcher  
Jim & Janis Funk

Brian & Elizabeth Gantz  
Dave & Kathy Hahn Keiner '79  
Corey & Amber Hart  
Steve & Therese Hartley  
Bill & Sally Hasbrook  
Steve & Anna Hastings  
Barry & Monica (Ruberg) '04 Helfrich  
Abbe Hohmann '70  
JB & Mary Kay Hudson  
Tom & Amanda Jarzyniecki  
Jared Johnson '98  
Mike & Jane Jones  
Blair '79 & Laura Kellison  
Peter '72 & Barb (Brinkman) '72 Knapp  
Mike '86 & Christina Konrad  
Dave & Rebecca Kroner  
Timothy & Colleen Kuehr  
Lakewind Investments  
John & Regina Leone  
Mary Leppert  
William & Kathleen Leppert  
John & Maureen Lewis  
Tom & Suzanne Lewis  
Jorge '68 & Kandice Llera  
Tim & Katie (Kenney) '88 Malarney  
David & Catherine Marrano  
Tim '94 & Stacie Marsh  
Keith & Pam Martin  
Nicole Martin  
Sara Mason  
Tyler & Allison (Mark) '00 Mayer  
Mark '80 & Jane McCrocklin  
Matt '80 & Heather (Evans) '89 McLaughlin  
James & Nina Meyer  
Bill Michaelis  
Michaelis  
Karl & Janet Mulvaney  
Christopher & Lisa (Zimonyi) '72 Murphy  
James '81 & Colette Murphy  
Mike '85 & Melinda Nash  
Ross & Pam Nixon  
Jeffrey & Laura Noel  
Kristi Norris '00  
Tim '91 & Maryanne O'Brien  
John '82 & Robyn O'Donnell  
Mark '69 & Carolyn O'Hara  
Optimal Living LLC - Sidney Eisgruber CMC, OTR  
Paul & Renee Pluckebaum  
Shannen & Jen (Traub) '88 Priser  
Quick Shred

John J. and Mary Helen (Lyons) '65 Quinn Fund  
Jeff Rayman '83  
Edreece & Erika Redmond  
Stephen & Susan Reuter  
Jonathan & Margaret Ruffing  
Tim & Kristin Rushenberg  
Dick & Marilyn Ryan  
Msgr. Joseph Schaedel  
Ken & Cathleen Scheer  
Andy '93 & Aly Schroeder  
John & Terri Schueth  
Patrick & Holly Sedlak  
Thomas Simms  
Joseph '87 & Karen Smith  
Joseph '87 & Emily Sochacki  
Rosemarie Sochacki  
Steve & Wendy St John  
Joe & Nancy (McDonald) '85 Steadham  
Darlene Stephens  
Storage Solutions  
Adam '00 & Erika Tarvin  
Mark & Amy Taylor  
Vince '91 & Cindy Todd  
Mary Ann Waldron  
Dick Weimer  
Brad & Julie Williamson  
Jeremy & Angie Wilson  
Stuart & Karen (Church) '86 Winterheimer  
Russ & Katy Yurk

**\$250 - \$499**

Accessa Coatings Solutions  
Alderman Automotive  
Joe '73 & Ame Alerding  
AmazonSmile  
Todd & Anne Andrews  
Anonymous (5)  
Liz Assalley  
Thomas Assalley  
Deegan Atha '13  
Chris & Dana Ball  
Bill '87 & Carole Barnhorst  
Matt '03 & Claire (Morrow) '03 Bastian  
Tim Beckman '84  
Heather Benson  
Thomas Berry  
Tony & Amy Board  
Rev. James Bonke  
Dennis '65 & Kathy Brake  
Steve & Lora Branson



## DONOR WALL BY AMOUNT (CONTINUED)

Tim '86 & Beth (Heneghan) '86 Brogan  
John '65 & Debra Brown  
Aaron '89 & Amy Campbell  
Capitol Supplies  
Mark & Sandi Carter  
Casey-Bertram  
Grantland Clapacs & Marla Smith  
Alan & Janice (Ockomon) '88 Clements  
Marc & Anne Collins  
Mike '65 & Lynn Collins  
Laura Conder  
Joe '86 & Nichole Copple  
Krissy (Hampton) '93 Cunningham  
Keith Curtis '82  
Michael & Sharon Cyganowski  
Derek '04 & Brittany DiSalvo  
Doug Donahue  
Bryan & Julia Dunn  
Dury Investment Group  
Bart Early '04  
Enviro-Max, Inc.  
Charles & Theresa Fadale  
Dan & Marilynn Fagan  
Thom & Kathleen Fairchild  
Brian & Laura Falcon  
Christopher & Paje Felts  
Mike '76 & Elaine Ford  
Jan (Breiner) '69 Frazier  
Sharon Gann  
Kevin & Amy Gebke  
Genesis Sports Performance  
Beth Greene  
Jerry & Christine Haas  
Jim & Eva (Lahee) '65 Hamant  
Elizabeth Hansen '69  
Joe & Gina Hansen  
Robert & Anne Harless  
John '69 & Marianne Hart  
Diana (Barrett) '65 Hay  
Bill & Barbara Hazel  
Ellen Healey  
Matt & Amanda (Kramer) '91 Hibbeln  
Matt '04 & Katie Hilton  
Matt '04 & Anne (Hurrle) '06 Homan  
Dan '77 & Susie (Lee) '78 Homan  
Will '04 & Jen Hurrle  
Joseph '68 & Susan '68 Huser  
Angel Ingram  
JAT of Fort Wayne  
Susan Jennings  
Steve & Elizabeth Johnson

Mike '91 & Jennifer Kaplan  
Aaron & Maureen (Moynahan) '91 Kauffman  
Mike & Linda (Vogelgesang) '68 Kavanaugh  
Kiernan '89 & Melissa Keating  
Rich & Jen Kelly  
Sean & Katie (Norton) '02 Kennedy  
Mallory (Curtin) '09 Kirschner  
Bob '75 & Cindi Klee  
Bruce & Katie Klineman  
Robert '71 & Betsy Krueger  
Joe & Caren LeMark  
Mickey Lentz  
John '80 & Rebecca Leonard  
John & Maura (Bailey) '98 Leppert  
Eric & Jenny (Bryant) '03 Lis  
Patrick '91 & Melissa Lotti  
Dan & Kelly Lucas  
LUMIN-AIR  
Bill '72 & Linda (Lux) '71 Lynch  
M.A.B. & Associates, Inc.  
Dan '78 & Carol Mark  
Denis & Susan (Mark) '66 McCusker  
Bob McLain  
Jim & Terri (Weaver) '77 McLaughlin  
Carolyn (Perrin) '65 McMahon  
Eric & Julie McNamar  
Jeff & Kristen Merritt  
Tim & Tracy Miller  
Rev. Joseph Moriarty  
Brian Naab '97  
Noel-Smyser Engineering Corp.  
Northside Glass  
Kevin '09 & Katie (Bates) '09 O'Brien  
Brigid O'Brien  
Timothy '76 & DeDe (Doyle) '76 O'Connor  
Tom & Elizabeth O'Gara  
Juan & Julia Rose Ochoa  
Marshall & Karen Parker  
Jim & Jamie (Bourquin) '98 Pike  
Heidi Pozsgai  
Jamie '69 & Kathryn Pratt  
Praxis Media Group  
Ralph & Cathleen Purcell  
R.P. Lux Company  
Robin Reagan  
Brian '03 & Lauren Reed  
Remax - The Sergi Group  
Daniel & Ruth (Altherr) '76 Rensch  
Joe & Melinda Rivelli  
R.J.L. Family Gift Fund  
Robert Dietrick Co., Inc.

Roberts Glass & Service Inc.  
Alan & Ruth Roell  
S.A. Berg Company  
Bill & Debbie Sahn  
Bob '03 & Megan Schaffner  
Matt '01 & Beth Scheidler  
Stephen Scheller '76  
Bob '81 & Diane (Fillenwarth) '87 Schultz  
Eric & Jessica Sessions  
Brad Smith Art Fund  
Melissa Smith '10  
Benjamin Sowinski '15  
John & Carol (Thompson) '65 Stumpf  
Jennifer Sullivan '03  
Andrew '91 & Chrissy Swickheimer  
The Hurrle Family  
The Motz Group  
The Noll Landscape Group  
Art & Jennifer Timpe  
Trilogy Marketing LLC  
Mary Beth (Kirkhoff) '90 Troy  
Nancy Valdiserri  
John & Cathy (Rea) '78 Wagner  
Walker Dixon Orthodontics  
Maria Walsh  
Edward '65 & Barbara Walsh  
Seamus '92 & Lori Wheeler  
Walker & Carolyn White  
Williams and Caskey HOA Management  
John & Julie Wood

### **\$100 - \$249**

Samantha Adair-White  
Dan Adams & Ana Gallegos-Adams  
Tim '68 & Ginny Akin  
Maggie Albright  
Candace (DeSchryver) '00 Anastasio  
Michael & Kelly Anderson  
Theresa (Persinger) '76 Anderson  
Janet Andriole  
Anonymous (19)  
Raul Arteaga  
Paul & Amy Ashley  
Preston & Kristi Aspeslet  
Frederick & Susan (Traub) '89 Baker  
Andrew & Jamie (Schnieders) '96 Baldwin  
Mark & Julie Barbato  
Scott & Kathy Beasley  
Joel & Keely (Norris) '99 Beaudette  
Mike '79 & Julie Behringer



Thomas Bella  
Merle Bettenhausen  
Greg Bielefeld & Shannon Conner  
Donald & Trish Biggs  
Glenn '86 & Colleen Bill  
Michael & Joan (Loughery) '70 Bindner  
Matthew & Melissa (Costello) '95 Bishop  
Ken '83 & Sheila (Andrews) '83 Blackwell  
Eric Riegner & Nicole Bledsoe  
Paul & Sharon Bosler  
Judy Bosshart  
Rev. Phil Bowers\*  
James & Helen (Schweitzer) '65 Bowers  
Andrew & Kriss Bowes  
Pat '82 & Mattie (Burch) '82 Boyce  
Bob & Tish Brafford  
Deacon Michael & Wendy Braun  
Jay & Kathryn (Carlen) '76 Brehm  
Joanne Brezette  
Bryan & Beth Brown  
Doug & Wendy Brown  
Des Neiges Buchanna  
Jim & Andrea Burnett  
Andrew '00 & Katie (Lee) '01 Burnett  
Derren & Jenny Bush  
Joe & Kerry (Fagan) '86 Butkovich  
Joe & Lucy Cahill  
Richard Carlen  
Carmel Road Racing Group, LLC  
Mike Carney  
Caskey Capital Group LLC  
Michael & Mary (Dawson) '67 Chapman  
Kip & Nicole Chase  
David '74 & Nancy (Lubbers) '74 Cheesman  
Patrick & Laura Chesebrough  
Adrienne Cohoat  
Jim '76 & Lorraine Commiskey  
Tara Coolbaugh '05  
Kasey '87 & Amy (Kinsey) '86 Corbett  
Jeff & Marcy Corns  
Rachel Cross  
Crowe LLP  
Jim & Nellita Cuniffe  
John & Staci DeFabis  
Robert & Theresa Desautels  
Bob '73 & Karen Dietrick  
Andy '01 & Shelly (Clifford) '01 Dill  
Jim & Chris Dossman  
Tom & Mary (Schneiders) '01 Drew  
Steve & Kris Duncan  
Michael & Julie Dunn

Steve & Chelsea Durnil  
Pat '75 & Kirstine Early  
Joseph & Ute Eble  
Chris Eck '75  
Kevin & Beverly Farrell  
Tom & Sharon Figura  
Val Fillenwarth  
Michael Finnegan '77  
James & Amber Fleming  
Chris & Colleen (O'Connor) '89 Fuydal  
Brian Gamache '13  
Michael & Karen Gardner  
Jim '65 & Kathleen Garth  
Elias Geronimo & Gisela Ocelotl  
James Goebel '84  
Robert '74 & Nancy Gorgol  
Laura (Leffler) '00 Gorr  
Dennis Graham '76  
Barbara Gregory  
Corey Groepper  
Bob & Beth (Bloemker) '66 Groves  
Marc '79 & Daneen Guess  
Rod & Maureen (O'Connor) '72 Guimont  
John '82 & Gina Hagelskamp  
Kevin Hahn '77  
Niles & Rhesa Hansen  
Charles Harpenau  
Chuck '88 & Maria Harr  
Sophia (Banks) '81 Harris  
Joe & Cindy (Dall) '78 Harvey  
Andrew & Julia (Treadway) '96 Hasbrook  
Jesse & Stacy (Traylor) '05 Helmuth  
Lori Herrera  
Jeffrey Hiatt '83  
Ron Hill  
Jeff & Allison Holman  
David & Theresa Holt  
Amy Holton  
Tony Holton  
Jan Homan  
Rich '76 & Angie Huffine  
Patricia (Flynn) '66 Hughes  
Ralph & Nancy (Niesse) '65 Iles  
Indianapolis Container Company  
Jason & Jennifer Kehrner  
Robert & Cathy (Bowden) '70 Kellogg  
Frank & Shannon Kelsey  
Jason & Amy (Bates) '86 Kidwell  
Mark Kirkpatrick '76  
Kevin & Ginny (Mattingly) '78 Kirschner  
Ron & Barb Knapp

Stephen & Terri Knoll  
Donald & Gerry Koors  
Thomas & Melissa Kramer  
Larry '79 & Paula Kramer  
Ted '82 & Deirdre Labus  
Lam Law Office  
Ryan & Carisa Laughon  
Otha Lawrence  
Kyung Jin Lee '14  
Robert & Paula (Von Tobel) '65 Lee  
Jacob & Beth Leffler  
Philip Lehmkuhler & Sarah Shaughnessy  
Nathan & Erica Lelle  
Mike & Autumn Leppert  
Bob & Faith Linden  
Brian Loane  
Mike '76 & Lisa Lubbers  
Mark Lyons '67  
Terri (Keating) '75 Macaluso  
Warren & Lesley MacKellar  
Very Rev. Doug Marcotte  
Greg '72 & Donna Kay Mark  
Stacey McCarthy  
Jack McGillicuddy '20  
Don & Theresa McMahon  
Mark & Kimberly McMillian  
Robert & Janet (Owens) '81 McNabb  
Alex Miller '09  
Julie Miller Cafferata  
Chad & Angela Minch  
Philip & Sue (Farney) '77 Mokris  
Marie-Gabrielle Morrison  
Aaron & Kimberly Morrow  
Thomas Mulhern  
Paul '97 & Mary Kate Mullin  
Ryan & Sarah Murphy  
Beth (Weingardt) '81 Myers  
Don & Betty Nester  
John & Kristina Noel  
Lisa Noone '87  
H. Burch Nunley '00  
Brian '69 & Rebecca O'Connor  
Maureen (O'Hara) '81 Riner  
Pat '81 & Katherine O'Shaughnessy  
Jack & Tammy O'Tain  
Margaret Ogan '65  
Ken & Melissa Ogorek  
Jeff & Lee Osborn  
Lawson & Maria Osuji  
Robert & Barbara Palladino  
Enzo & Cheryl Papalia



## DONOR WALL BY AMOUNT (CONTINUED)

Harold & Phyllis Parker  
John & Frances (Glesing) '70 Pasalich  
Tony '92 & Katie Pastorino  
Eduardo Paz  
Rick & Shelly Penny  
Greg & Michelle Peters  
Michael & Michele Pettrone  
James & Beth Piatt  
Jason Pinkstaff  
Tom '76 & Jean Pluchar  
Steven & Sheila Pluckebaum  
Brent & Katie (Akin) '70 Popplewell  
Mike '81 & Maribeth (Maloof)\* '81 Presnal  
Vincent & Karen Purichia  
James '65 & Patricia Quatman  
Richard Keating & Susan Ranft '71  
Sheilah Reardon '65  
Mary Jo Reed  
Greg Reed '65  
Jamie & Amanda Rickard  
Rev. Todd Riebe  
Jordan & Katie (Brezette) '92 Riggs  
Marc & Melissa Rightley  
Traci Rodgers  
Priscilla Rogers  
Peter & Lisa Rohan  
Ken Roseman  
Cari Roush  
Monica Rowe  
Bob & Debbie Rudolph  
Stuart '78 & Michele (Greskamp) '77 Sabol  
Philip '68 & Jackie Sanders  
John & Mary (Alerding) '76 Schaffner  
David '75 & Denise Scheidler  
Jimmy '05 & Katie (Dominguez) '05 Scheidler  
Diane (Miller) '65 Schmidt  
Margie Schmitz  
Bill '80 & Joni Schneider  
Chris & Judi (Dum) '77 Seidel  
Jennifer (Neill) '88 Selby  
Thomas & Rosalind Shaffer  
Thomas Shaffer  
Kathy (Harrig) '69 Shallington  
Matt & Kate Shanks  
Chris & Mari Anna Shepherd  
Rev. Bob Sims  
Daniel & Janet Skinner  
Steve & Kathleen Smith  
Edward Snelz '78  
Nicholas Sowinski '18  
Paul & Michele Spencer

St. Thomas Aquinas Church  
Dave & Maggie Stevens  
Mary Stonner '13  
Holly Stults  
Rev. Msgr. Bill Stumpf  
John Sullivan '81  
Joseph Sullivan '65  
Thomas '72 & Sharon Sullivan  
Patrick & Sheryl Sweeney  
Tasneem Talib  
Lee '02 & Katherine (Betourne) '03 Thompson  
Jack '68 & Karin Thompson  
Charles & Joan Thompson  
Dwight & Dee Thompson  
Geoff Thompson & Jennifer Wood-Thompson  
Jeff & Beth (Serban) '87 Thrasher  
Cindy Traub '97 and John Kindschuh  
Dan '89 & Tracey Traub  
Tony '74 & Denise Tyler  
Brad & Kelly VanVleet  
Roy & Candace Walz  
Bennie & Catherine (Bates) '08 Waters  
Patrick & Jennifer Waugh  
Larry Weaver '80  
Patricia (Feeney) '65 Webster  
Catherine Welch  
Rita Welch '71  
Jeff & Nancy Welch  
Vincent '74 & Pamela Welch  
Kristin & Laura Welty  
Joel & Katherine Wentworth  
Susan Wiggernhorn '69  
Charles & Robbie Williams  
Ryan & Amanda Wilmering  
Joni (O'Donnell) '65 Wilson  
Rosie Wolfla  
Jon & Jennifer Wright  
Kyle & Allison Yancey  
Tim '82 & Beth (Nichols) '82 Yeadon  
William & Colleen Yeadon  
Darin Young & Michele McCarthy  
Alex & Nancy Yovanovich

### \$1 - \$99

Rose Acklin  
Elizabeth Adams  
Kerry & Margie (Daniels) '81 Addington  
Aging Life Consultants  
Kiran Alby  
Lisa (Countryman) '75 Allen

Claudia Alvis  
Aaron Alvis  
William Anderson '81  
Anonymous (13)  
Aaron & Jaime Armour  
Robert & Julie Armstrong  
Ted & Marsha Austin  
Collin '17 & Justine Aycock  
Robert & Amy (Howard) '86 Ayer  
Albert & Deanne Bacon  
Dave & Marigrace Bailey  
Craig & Jennifer Baker  
Richard & Sally Baker  
Michael & Sarah Bardol  
Jon '81 & Angela (Mattingly) '82 Bates  
Jerry & Kristine (Firehammer) '74 Becher  
Thomas '75 & Sandy Beck  
Helen Beckert  
Rich & Kathy Beckom  
Jason & Kelly Beikes  
Eileen Benson  
Matthew & Lindsay (Valentine) '04 Berman  
Jon & Sara (Ford) '01 Berscheit  
Rodney & Karen Bertram  
Nate & Rachel Berzai  
Mike & Nicole Biberstine  
Bradley & Lori Bisser  
James & Melissa Bolen  
Mark & Diane Bollinger  
Randy & Regina Boon  
Bo & Katie (Schnieders) '98 Boroski  
Erin Boschert  
Mary Ellen Bossom  
Amie Bowman '98  
Justin Braun  
Bill Brenza  
Jody Brezette '06  
Lujuana Brown  
Mary Ellen Brown  
Liz (Fadale) '04 Brown  
Matthew & Jacqueline Burkholder  
Kevin Cairns '02  
Dan & Erin Campbell  
David & Chris Carlyle  
Terese Carson  
Christina Carter  
Maureen Caruso  
Thomas Cassidy & Sharon Stark  
Tom & Patty Catton  
Travis & Whitney Chapman  
Tom & Donna Chastang



Ann Chasteen  
Chavis Center LLC  
Scott '88 & Kristie (Hair) '89 Cheek  
Joe '85 & Sarah (Blake) '86 Cheesman  
Tom & Margaret Chiplis  
Chris Chiplis '90  
Tom '68 & Susan Christenberry  
Rebecca Churchward  
Jane (Sitzman) '65 Clark  
Adam & Molly (McGlinchey) Clauss '09  
Jim & Marsha Cline  
Coca-Cola Give  
Daniel & Karen Courtney  
Bill & Kathy (Faust) '76 Craig  
Matthew & Jill Cridge  
Kameron & Sheila Cullina  
Molly Czernik  
Derek & Julie (Dickinson) '05 Dant  
Betsy Davies  
Tim & Milissa Davis  
Christy Desmarais  
David Dessauer '76  
Michele Dessauer  
Jeffery & Deanna DeVettori  
Andy Dietrick '75  
Brian & Tracy Disney  
Andrew & Andrea Donaldson  
Andy '88 & Colleen (Jones) '88 Doyle  
John & Cathy Duda  
Eric & Jennifer Dudik  
Dick & Antoinette Dullaghan  
Mike '81 & Maria Dum  
Mark & Michelle (Breen) '04 Duncan  
Mark & Clara Duray  
Molly Dury  
Brian & Janet (Sahm) '06 Easter  
Elizabeth Eismeier  
Elizabeth Ellis  
Raymond & Stephanie Engelman  
Erie Insurance  
Garry Rady & Sheila Evans  
Mary Claire Fagan '15  
Daryn & Terri Fair  
Maureen (Nelson) '83 Faul  
Riley Ferguson '16  
Scott '89 & Shontel (Jors) '89 Fischer  
Brandon & Yan Folck  
Courtney Forestal '08  
Harrison Fouse '05  
Matt & Molly Fowler  
JJ & Susan Frasier  
Sean & Meredith (Smith) '00 Fredrickson

J.T. '01 & Sarah (Morrow) '99 Funk  
Nancy Garcia  
Nick & Terren (Bailey) '03 Gardner  
William & Meggin Gates  
Jay & Nicole Geise  
Igor & Maria Gejdosova  
Leah GiaQuinta  
Mike & Kristyn (Tekulve) '00 Gibson  
Travis & Caroline Giedd  
Emily Glanders  
Michael & Dianne (Booker) '68 Glaser  
Benedict & Laura Gonzalez  
Janice Goossens  
Diana (Henneberry) '76 Gray  
Johnathan Grismore  
Greg & Dawn Guffey  
Robert & Annelise (Vaughn) '98 Haag  
Barbara Haines  
Michael & Connie Haines  
Thomas Harold '88  
David Harpe '69  
Marika Harrison  
Lori Harter  
Raymond & Louisa Hayenga  
Paul '65 & Alice Hayes  
Christina Hayes  
Bryan & Chrissy Heim  
Mike '93 & Beth Heneghan  
Terence & Christine (Conway) '71 Henry  
Steve & Liz Hoffman  
Deborah Hopkins  
Karen Hopkins  
Katelyn Hopkins  
Tom & Mary Hornbach  
Mark & Peggy (Alerding) '79 Horton  
Joe & Leslie Howe  
Cheryl (Johnston) '82 Huffine  
Ashley Hutchinson  
Richard '75 & Virginia Ittenbach  
Janet Jackson '65  
Adam & Lynne Jaeger  
Luke & Katie Jahn  
Kelly Jennings '89  
Michael John  
Lucas & Susan (Johnson) '00 Johns  
Ed & Eileen Johnstone  
Christine Jones  
Jason Kaeppel  
Matt Kaminski  
Alison Kaminski  
Dave & Kathy Kaplan  
Tod Karpinski

Marty '71 & Virginia Kavanaugh  
Shawn '82 & Jo (Boyle) '83 Keating  
Steve Keers  
Lisa Kelly  
Robert & Catherine Killigrew  
Christopher & Carrie Kirby  
Dan & Jody Kirchgessner  
Dan Kiser '80  
Thomas & Margaret (Lynch) '76 Kline  
Patricia Koors '84  
Carolyn Krieg '65  
Jami Krogmeier '93  
James & Madelaine Krolik  
William & Sandra Kurker  
Chris & Amy Kutsunis  
Timothy & Susan Lacy  
Michael Lamping '74  
Kate Lange  
Eric & Kathy Lauer  
Mark '67 & Janet Laurent  
Jason & Meagan Lee  
Joseph LeMark  
Kristen Leone '04  
Tom & Jena Lewis  
Theresa Lintzenich  
Brad & Kerry Lloyd  
Matt & Jamie Lord  
Matt '06 & Claire (Breen) '05 Lubbers  
Chris Mark '09  
Carla Markey  
Michelle Marks  
Jeff Marsella  
Mary (Kenney) '84 Marsh  
Courtney Martin '04  
Phillip & Martha Martin  
Jamie Marx  
Thomas & Gayle Mass  
Alice Mattingly '75  
Ben & Melissa Mazzei  
Ashleigh McAfee  
Carolyn McCracken  
James & Cathy (Howard) '81 McDonald  
Holly (Hessel) '81 McGeehan  
Theresa McHolland  
Colin McSharar '07  
Ray & Tracy Meckauskas  
John '76 & Julie (Gallagher) '78 Meloy  
Chris & Julie Mennel  
William & Monica (Schilling) '91 Meyer  
Caroline (Quatman) '91 Miller  
Greg & Terri Miller  
Ronni Miller



## DONOR WALL BY AMOUNT (CONTINUED)

Tom Miller  
David & Elicia Mohler  
Louise Mohr  
Barbara Moloney  
Sherry Monachino  
Edward & Sara (Schneider) '65 Moody  
Tameka Moore  
Linda Morgason  
Pat & Amy Murray  
Gary & Mary Beth (Hughes) '75 Myers  
Rev. George Joseph Nangachiveettil  
Mike Nastav  
Bonnie Nelson  
John & Melissa (Popp) '03 Nimry  
Joseph & Stephanie O'Brien  
Jeffrey & Hilary Oberlies  
Osinachi Osuji '21  
Robert & Margaret Padgett  
Charles '89 & Janeen (O'Brien) '89 Park  
Kevin Parrish '75  
Barbara (Gapen) '72 Parsons  
Darren & Claire Pearson  
Ben & Andrea (McCalley) '75 Perkins  
Derek & Rebecca Perry  
Andrew Pike & Sharon Horvath  
Craig & Jennifer Polackin  
Shirley Posley  
Anthony & Kimberly Priami  
Judy Quackenbush  
Michael Qualters '85  
Kelly (Queisser) '76 Forestal  
Michelle Radomsky  
Lynn Ranft '89  
Paul & Michelle (Guise) '84 Reed  
Kelly Reid '65  
Cynthia Reinbold  
Raul Reyes & Columba Dominguez  
Tom & Mary Ann Richter  
Vern & Patricia (McCaley) '76 Roach  
Katherine (Layden) '90 Robbins  
Gary & Susan (Christy) '76 Rockoff  
Kara Rodgers  
Daniel Rogers '04  
Jason & Megan Ross  
David '87 & Michele Roth  
Josh & Molly Rowe  
Erika Rowe  
Todd & Kelly Ryan  
Richard & Maureen (Becher) '76 Sage  
Devin & Amy (Ockomon) '90 Sanders  
Tim & Sara (Beeler) '95 Schluge

Burke & Judith Schneider  
David Schnieders '06  
George & Catherine Schott  
Jeff Schroeder  
Rachel Schultz  
Kathryn Scofield  
Vicki Scott  
Donn '68 & Christine (Hurre) '68 Scotten  
Al & Molly (Pritchard) '67 Seidel  
MariJane Selvaggio  
Bryan Shade  
Brian '00 & Kathleen (Conway) '05 Shaughnessy  
Alex Simpson  
Joe & Carolyn Sitzman  
Michael Slosarz '76  
Amanda Smith '97  
Bryan & Jen Smith  
Katie Smith  
Robert Smith '18  
Jack & Barbara Snyder  
Rob & Katheryne Stapleton  
Mike & Janet Stewart  
Michael & Mary Anne (Poinsette) '76 Stohler  
Cecelia Stonner '16  
Hugh & Renae Stoudt  
Timothy '72 & C. Jeanie Sullivan  
Evan & Amy (Scheidler) '04 Sweet  
Richard & Ellen Szydlyk  
Royce & Beverly Taylor  
Lauren Taylor '12  
Scott & Haylee Teeple  
Robert & Monica Tender  
Ayanna Thacker  
Alex '96 & Sarah (Stocker) '96 Thatcher  
Jacqueline Tolin  
Jo Ann Traub  
Jerry & Betsy Traub  
Michael & Jennie Tremain  
Kelli Tromiczak  
Stephen & Eleanor Troy  
Heather Turner  
Matthew & Claire Tuschong  
Mark & Jennifer Underwood  
Corinne Vespelt  
Jeff & Emily Wann  
Eugene & Peggy Wantuck  
Nicholas & Maureen Weber  
Chuck Weisenbach  
Evans & Kelley Wells  
David Wendell  
Daniel & Courtney Wendt

Monica (Kramer) '86 Werner  
Bill '75 & Susie '76 (Tinder) White  
Carrie Wilson  
Shannon Wiltshire  
Chris & Kimberly Wuensch  
Debra Young  
Damion & Kendrick Young  
Mike & Patty Young  
Tim Youngblood '67  
Robert & Laura (Grannan) '66 Zell  
Brian Zetzl '94  
John '04 & Rachel Zimmerman

*\*denotes deceased*









# DONOR WALL BY CLASS

## CLASS OF '65

Anonymous (1)  
James & Helen (Schweitzer) '65 Bowers  
Dennis '65 & Kathy Brake  
John '65 & Debra Brown  
Jane (Sitzman) '65 Clark  
Mike '65 & Lynn Collins  
Rod & Janet (Steinfeld) '65 Corson  
Jim '65 & Kathleen Garth  
Jim & Eva (Lahee) '65 Hamant  
John '65 & June Haskin  
Diana (Barrett) '65 Hay  
Paul '65 & Alice Hayes  
Ralph & Nancy (Niesse) '65 Iles  
Janet Jackson '65  
Carolyn Krieg '65  
Robert & Paula (Von Tobel) '65 Lee  
Carolyn (Perrin) '65 McMahon  
Edward & Sara (Schneider) '65 Moody  
Margaret Ogan '65  
James '65 & Patricia Quatman  
John J. and Mary Helen (Lyons) '65 Quinn Fund  
Sheilah Reardon '65  
Greg Reed '65  
Kelly Reid '65  
Diane (Miller) '65 Schmidt  
John & Carol (Thompson) '65 Stumpf  
Joseph Sullivan '65  
Edward '65 & Barbara Walsh  
Patricia (Feeney) '65 Webster  
Joni (O'Donnell) '65 Wilson

## CLASS OF '66

Karole (Fagan) '66 Butz  
Commercial Finishing - Tim '66 and  
Penny (Hickel) '66 Hughes  
Bob & Beth (Bloemker) '66 Groves  
Patricia (Flynn) '66 Hughes  
Denis & Susan (Mark) '66 McCusker  
Robert & Laura (Grannan) '66 Zell

## CLASS OF '67

Michael & Mary (Dawson) '67 Chapman  
Steve & Cathe (Sherlock) '67 Fulcher  
Mark '67 & Janet Laurent  
Mark Lyons '67  
Al & Molly (Pritchard) '67 Seidel  
Tim Youngblood '67

## CLASS OF '68

Tim '68 & Ginny Akin  
Tom '68 & Susan Christenberry  
Joe Clark '68  
Dennis '68 & Jeanne Gernhardt  
Michael & Dianne (Booker) '68 Glaser  
Joseph '68 & Susan '68 Huser  
Mike & Linda (Vogelgesang) '68 Kavanaugh  
Jorge '68 & Kandice Llera  
Kevin & Susan (Roesch) '68 McDowell  
Philip '68 & Jackie Sanders  
Donn '68 & Christine (Hurrle) '68 Scotten  
Jack '68 & Karin Thompson

## CLASS OF '69

Anonymous (1)  
Buddy '69 & Martha Hennessey  
Joe Ford '69  
Mark '69 & Carolyn O'Hara  
Jan (Breiner) '69 Frazier  
Elizabeth Hansen '69  
John '69 & Marianne Hart  
Jamie '69 & Kathryn Pratt  
Brian '69 & Rebecca O'Connor  
Kathy (Harrig) '69 Shallington  
Susan Wiggernhorn '69  
David Harpe '69

## CLASS OF '70

Anonymous (1)  
Michael & Joan (Loughery) '70 Bindner  
James '70 & Doris Brogan  
Bruce & Jeanne (Lynch) '70 Conner  
Abbe Hohmann '70  
Robert & Cathy (Bowden) '70 Kellogg  
John & Frances (Glesing) '70 Pasalich  
Brent & Katie (Akin) '70 Popplewell

## CLASS OF '71

Anonymous (1)  
Terence & Christine (Conway) '71 Henry  
Marty '71 & Virginia Kavanaugh  
Robert '71 & Betsy Krueger  
Bill '72 & Linda (Lux) '71 Lynch  
Tom & Kathleen (O'Brien) '71 Miller  
Richard Keating & Susan Ranft '71  
Rita Welch '71

## CLASS OF '72

Anonymous (1)  
Rod & Maureen (O'Connor) '72 Guimont  
Peter '72 & Barb (Brinkman) '72 Knapp  
Bill '72 & Linda (Lux) '71 Lynch  
Greg '72 & Donna Kay Mark  
Christopher & Lisa (Zimonyi) '72 Murphy  
Barbara (Gapen) '72 Parsons  
John Scheidler '72  
Thomas '72 & Sharon Sullivan  
Timothy '72 & C. Jeanie Sullivan

## CLASS OF '73

Joe '73 & Ame Alerding  
Bob '73 & Karen Dietrick  
Kevin '73 & Kate Shine

## CLASS OF '74

Jerry & Kristine (Firehammer) '74 Becher  
Rick Brodfuehrer & Karen (Dugan) '74  
Pappas-Brodfuehrer  
David '74 & Nancy (Lubbers) '74 Cheesman  
Tom '74 & Diane Funk  
Robert '74 & Nancy Gorgol  
Michael Lamping '74  
Tony '74 & Denise Tyler  
Vincent '74 & Pamela Welch

## CLASS OF '75

Lisa (Countryman) '75 Allen  
Anonymous (2)  
Tom '75 & Kris Barnes  
Thomas '75 & Sandy Beck  
Joe & Laurie (Huffine) '75 Breen  
Andy Dietrick '75  
Pat '75 & Kirstine Early  
Chris Eck '75  
Nannette Eckert '75  
Richard '75 & Virginia Ittenbach  
Bob '75 & Cindi Klee  
Terri (Keating) '75 Macaluso  
Alice Mattingly '75  
Gary & Mary Beth (Hughes) '75 Myers  
Kevin Parrish '75  
Ben & Andrea (McCalley) '75 Perkins  
David '75 & Denise Scheidler  
Bill '76 & Cokie (O'Brien) '75 Scheidler  
Msgr. Tony Volz '75  
Bill '75 & Susie '76 (Tinder) White

## DONOR WALL BY CLASS (CONTINUED)

### CLASS OF '76

Theresa (Persinger) '76 Anderson  
Anonymous (1)  
Jay & Kathryn (Carlen) '76 Brehm  
Jim '76 & Lorraine Commiskey  
Bill & Kathy (Faust) '76 Craig  
Phillip '76 & Mary Dall  
David Dessauer '76  
John '76 & Nancy (Akin) '76 Dury  
Charles '76 & Karen Feeney  
Mike '76 & Elaine Ford  
Dennis Graham '76  
Diana (Henneberry) '76 Gray  
Rich '76 & Angie Huffine  
Mark Kirkpatrick '76  
Thomas & Margaret (Lynch) '76 Kline  
Mike '76 & Lisa Lubbers  
John '76 & Julie (Gallagher) '78 Meloy  
Timothy '76 & DeDe (Doyle) '76 O'Connor  
Tom '76 & Jean Pluchar  
Kelly (Queisser) '76 Forestal  
Daniel & Ruth (Altherr) '76 Rench  
Vern & Patricia (McCaley) '76 Roach  
Gary & Susan (Christy) '76 Rockoff  
Richard & Maureen (Becher) '76 Sage  
John & Mary (Alerding) '76 Schaffner  
Bill '76 & Cokie (O'Brien) '75 Scheidler  
Stephen Scheller '76  
Michael Slosarz '76  
Michael & Mary Anne (Poinsette) '76 Stohler  
Bill '75 & Susie '76 (Tinder) White

### CLASS OF '77

Anonymous (1)  
Michael Finnegan '77  
Kevin Hahn '77  
Dan '77 & Susie (Lee) '78 Homan  
Jim & Terri (Weaver) '77 McLaughlin  
Philip & Sue (Farney) '77 Mokris  
Stuart '78 & Michele (Greskamp) '77 Sabol  
Chris & Judi (Dum) '77 Seidel

### CLASS OF '78

Sarah (Shirley) Chasoff '78  
Chris '78 & Debbie Collison  
Chris (Cutshall) '78 Diana  
Rob & Libby (Akin) '78 Doyle  
Joe & Cindy (Dall) '78 Harvey  
Dan '77 & Susie (Lee) '78 Homan

Doug '78 & Laurie Jones  
Kevin & Ginny (Mattingly) '78 Kirschner  
Dan '78 & Carol Mark  
John '76 & Julie (Gallagher) '78 Meloy  
Stuart '78 & Michele (Greskamp) '77 Sabol  
Edward Snelz '78  
Sullivan Hardware - Pat '78 &  
Beth (Ansty) '78 Sullivan  
John & Cathy (Rea) '78 Wagner

### CLASS OF '79

Anonymous (2)  
Mike '79 & Julie Behringer  
Jim Deitchman '79  
Tim Farney '79  
Marc '79 & Daneen Guess  
Dave & Kathy Hahn Keiner '79  
Mark & Peggy (Alerding) '79 Horton  
Blair '79 & Laura Kellison  
Larry '79 & Paula Kramer  
Maureen (O'Hara) '81 Riner  
Larry '79 & Rita Parsons  
Rev. Tom Schliessmann '79  
Kathy (Barnes) '79 Tekulve  
Paul '79 & Mary (Sullivan) '81 Weaver

### CLASS OF '80

Anonymous (1)  
Flanner Buchanan & Catholic Cemeteries  
Association- Maureen O'Hara '81 &  
Mark McCrocklin '80  
Bob & Susie (O'Connor) '80 Hill  
Dan Kiser '80  
John '80 & Rebecca Leonard  
Mark '80 & Jane McCrocklin  
Matt '80 & Heather (Evans) '89 McLaughlin  
Eileen (O'Brien) '80 Metzger  
Bill '80 & Joni Schneider  
Larry Weaver '80

### CLASS OF '81

Kerry & Margie (Daniels) '81 Addington  
William Anderson '81  
Anonymous (2)  
Jon '81 & Angela (Mattingly) '82 Bates  
Mike '81 & Maria Dum  
Flanner Buchanan & Catholic Cemeteries  
Association- Maureen O'Hara '81 &  
Mark McCrocklin '80  
Sophia (Banks) '81 Harris

Mike '81 & Beth Jansen  
James & Cathy (Howard) '81 McDonald  
Holly (Hessel) '81 McGeehan  
Robert & Janet (Owens) '81 McNabb  
James '81 & Colette Murphy  
Beth (Weingardt) '81 Myers  
Maureen (O'Hara) '81 Riner  
Pat '81 & Katherine O'Shaughnessy  
Mike '81 & Maribeth (Malooof)\* '81 Presnal  
Bob '81 & Diane (Fillenwarth) '87 Schultz  
John Sullivan '81  
Paul '79 & Mary (Sullivan) '81 Weaver

### CLASS OF '82

Michael & Jeanne (Capone) '82 Agostino  
Anonymous (1)  
Jon '81 & Angela (Mattingly) '82 Bates  
Pat '82 & Mattie (Burch) '82 Boyce  
Keith Curtis '82  
Kevin Curtis '82  
John '82 & Gina Hagelskamp  
Cheryl (Johnston) '82 Huffine  
Shawn '82 & Jo (Boyle) '83 Keating  
Ted '82 & Deirdre Labus  
John '82 & Robyn O'Donnell  
Tim '82 & Beth (Nichols) '82 Yeadon

### CLASS OF '83

Ken '83 & Sheila (Andrews) '83 Blackwell  
David & Carol (Qualters) '83 Burchard  
George '83 & Theresa Dury  
Maureen (Nelson) '83 Faul  
Daniel '83 & Amy (Eck) '84 Fillenwarth  
Jeffrey Hiatt '83  
Shawn '82 & Jo (Boyle) '83 Keating  
Jeff Rayman '83

### CLASS OF '84

Chris '84 & Debbie Barnes  
Tim Beckman '84  
Daniel '83 & Amy (Eck) '84 Fillenwarth  
James Goebel '84  
Glenn '84 & Cindy Harkness  
Patricia Koors '84  
Mary (Kenney) '84 Marsh  
Terry '84 & Laura O'Brien  
Paul & Michelle (Guise) '84 Reed  
Bill '84 & Susan (Hunsicker) '84 Ripberger



**CLASS OF '85**

Joe '85 & Sarah (Blake) '86 Cheesman  
EPIC Insurance Midwest, Peter Forsee '85  
and John Sahn '85  
Peter '85 & Jenny Forsee  
Dan '85 & Carrie Hackman  
Mike '85 & Melinda Nash  
Michael Qualters '85  
Joe & Nancy (McDonald) '85 Steadham

**CLASS OF '86**

Anonymous (1)  
Robert & Amy (Howard) '86 Ayer  
Glenn '86 & Colleen Bill  
Tim '86 & Beth (Heneghan) '86 Brogan  
Ron & Angi (Froehlich) '86 Burkard  
Joe & Kerry (Fagan) '86 Butkovich  
Joe '85 & Sarah (Blake) '86 Cheesman  
Joe '86 & Nichole Copple  
Kasey '87 & Amy (Kinsey) '86 Corbett  
Jason & Amy (Bates) '86 Kidwell  
Mike '86 & Christina Konrad  
Tim & Sheila (Kenney) '86 McNelis  
Dave Schapker & Michelle (Jentz) '86 Haimbaugh  
Monica (Kramer) '86 Werner  
Stuart & Karen (Church) '86 Winterheimer

**CLASS OF '87**

Anonymous (2)  
Bill '87 & Carole Barnhorst  
Kasey '87 & Amy (Kinsey) '86 Corbett  
Katie (Sullivan) '87 Evans  
Mark '87 & Alice Hannon  
Lisa Noone '87  
David '87 & Michele Roth  
Bob '81 & Diane (Fillenwarth) '87 Schultz  
Joseph '87 & Karen Smith  
Joseph '87 & Emily Sochacki  
Jeff & Beth (Serban) '87 Thrasher

**CLASS OF '88**

Terry '88 & Beth Brogan  
Scott '88 & Kristie (Hair) '89 Cheek  
Alan & Janice (Ockomon) '88 Clements  
Andy '88 & Colleen (Jones) '88 Doyle  
The Drew Family  
Thomas Harold '88

Chuck '88 & Maria Harr  
Steve & Kathy (Sitzman) '88 Koers  
Tim & Katie (Kenney) '88 Malarney  
John & Julie (Goebel) '88 Nagel  
Shannen & Jen (Traub) '88 Priser  
Rob & Julie (Church) '88 Pruitt  
Jennifer (Neill) '88 Selby  
Greg '88 & Carol Stephens

**CLASS OF '89**

Anonymous (2)  
Frederick & Susan (Traub) '89 Baker  
Mark '89 & Amy Bridenstine  
Aaron '89 & Amy Campbell  
Scott '88 & Kristie (Hair) '89 Cheek  
Scott '89 & Shontel (Jors) '89 Fischer  
Chris & Colleen (O'Connor) '89 Fuydal  
Kelly Jennings '89  
Kiernan '89 & Melissa Keating  
Mike '89 & Melissa Knapp  
Russ '89 & Kelli Lawrence  
Matt '80 & Heather (Evans) '89 McLaughlin  
Charles '89 & Janeen (O'Brien) '89 Park  
Lynn Ranft '89  
Dave '89 & Paula (Feist) '89 Smith  
Dan '89 & Tracey Traub

**CLASS OF '90**

Anonymous (2)  
Chris Chiplis '90  
Brad & Eileen (Powell) '90 Countryman  
John & Jo Lynn (Ewing) '90 Garing  
Mick '90 & Laura Mates  
Pat '90 & Deanna Murphy  
Katherine (Layden) '90 Robbins  
Devin & Amy (Ockomon) '90 Sanders  
Mary Beth (Kirkhoff) '90 Troy

**CLASS OF '91**

Anonymous (1)  
Matt & Amanda (Kramer) '91 Hibbeln  
Mike '91 & Jennifer Kaplan  
Aaron & Maureen (Moynahan) '91 Kauffman  
Mark '91 & Meg Linden  
Patrick '91 & Melissa Lotti  
William & Monica (Schilling) '91 Meyer  
Caroline (Quatman) '91 Miller  
Tim '91 & Maryanne O'Brien

John '91 & Paula Ryan  
Jim & Kelly (Desautels) '91 Stehlik  
Andrew '91 & Chrissy Swickheimer  
Vince '91 & Cindy Todd

**CLASS OF '92**

Tony '92 & Katie Pastorino  
Jordan & Katie (Brezette) '92 Riggs  
Seamus '92 & Lori Wheeler

**CLASS OF '93**

Krissy (Hampton) '93 Cunningham  
Mike '93 & Beth Heneghan  
Jami Krogmeier '93  
Marty '93 & Michelle (Linden) '94 Mates  
Andy '93 & Aly Schroeder  
Ben '93 & Courtney (Lorch) '97 Spiegel

**CLASS OF '94**

Tim '94 & Stacie Marsh  
Marty '93 & Michelle (Linden) '94 Mates  
Brian Zetzl '94

**CLASS OF '95**

Anonymous (1)  
Matthew & Melissa (Costello) '95 Bishop  
Tim & Sara (Beeler) '95 Schluge

**CLASS OF '96**

Anonymous (2)  
Andrew & Jamie (Schnieders) '96 Baldwin  
Andrew & Julia (Treadway) '96 Hasbrook  
Alex '96 & Sarah (Stocker) '96 Thatcher

**CLASS OF '97**

Keith '97 & Deborah Carroll  
Steve Koers, John H. Lewis, and Paul Mullin '97 of  
Lewis & Wilkins Law Firm  
Paul '97 & Mary Kate Mullin  
Brian Naab '97  
Amanda Smith '97  
Ben '93 & Courtney (Lorch) '97 Spiegel  
Cindy Traub '97 and John Kindschuh

# DONOR WALL BY CLASS (CONTINUED)

## CLASS OF '98

Bo & Katie (Schnieders) '98 Boroski  
Amie Bowman '98  
Robert & Annelise (Vaughn) '98 Haag  
Jared Johnson '98  
John & Maura (Bailey) '98 Leppert  
Jim & Jamie (Bourquin) '98 Pike  
Andy '98 & Jessie Sahn  
Wenclewicz Insurance LLC, Mark Wenclewicz '98

## CLASS OF '99

Joel & Keely (Norris) '99 Beaudette  
J.T. '01 & Sarah (Morrow) '99 Funk

## CLASS OF '00

Candace (DeSchryver) '00 Anastasio  
Andrew '00 & Katie (Lee) '01 Burnett  
Sean & Meredith (Smith) '00 Fredrickson  
Mike & Kristyn (Tekulve) '00 Gibson  
Laura (Leffler) '00 Gorr  
Lucas & Susan (Johnson) '00 Johns  
Tyler & Allison (Mark) '00 Mayer  
Kristi Norris '00  
H. Burch Nunley '00  
Brian '00 & Kathleen (Conway) '05 Shaughnessy  
Adam '00 & Erika Tarvin

## CLASS OF '01

Jon & Sara (Ford) '01 Berscheit  
Andrew '00 & Katie (Lee) '01 Burnett  
Andy '01 & Shelly (Clifford) '01 Dill  
Tom & Mary (Schneiders) '01 Drew  
J.T. '01 & Sarah (Morrow) '99 Funk  
Matt '01 & Beth Scheidler

## CLASS OF '02

Marty '02 & Lauren (Kern) '02 Brown  
Kevin Cairns '02  
Joseph '02 & Laura (Sheehan) '02 DiSalvo  
Sean & Katie (Norton) '02 Kennedy  
John '02 & Sarah (Ball) '03 Scheidler  
Lee '02 & Katherine (Betourne) '03 Thompson  
Scott Wenclewicz '02  
Pat Zimmerman '02

## CLASS OF '03

Anonymous (1)  
Matt '03 & Claire (Morrow) '03 Bastian  
Mike '03 & Carly (Mattingly) '05 Dury  
Nick & Terren (Bailey) '03 Gardner  
Eric & Jenny (Bryant) '03 Lis  
John & Melissa (Popp) '03 Nimry  
Brian '03 & Lauren Reed  
Bob '03 & Megan Schaffner  
John '02 & Sarah (Ball) '03 Scheidler  
Jennifer Sullivan '03  
Lee '02 & Katherine (Betourne) '03 Thompson

## CLASS OF '04

Anonymous (1)  
Matthew & Lindsay (Valentine) '04 Berman  
Liz (Fadale) '04 Brown  
Kyle Deitchman '04  
Derek '04 & Brittany DiSalvo  
Mark & Michelle (Breen) '04 Duncan  
Bart Early '04  
Kyle '04 and Anna Fairchild  
Barry & Monica (Ruberg) '04 Helfrich  
Matt '04 & Katie Hilton  
Matt '04 & Anne (Hurrle) '06 Homan  
Will '04 & Jen Hurrle  
Kristen Leone '04  
Courtney Martin '04  
Daniel Rogers '04  
Evan & Amy (Scheidler) '04 Sweet  
John '04 & Rachel Zimmerman

## CLASS OF '05

Tara Coolbaugh '05  
Derek & Julie (Dickinson) '05 Dant  
Mike '03 & Carly (Mattingly) '05 Dury  
Harrison Fouse '05  
Jesse & Stacy (Traylor) '05 Helmuth  
Matt & Julia (Petrie) '05 Kaercher  
Matt '06 & Claire (Breen) '05 Lubbers  
Jimmy '05 & Katie (Dominguez) '05 Scheidler  
Brian '00 & Kathleen (Conway) '05 Shaughnessy

## CLASS OF '06

Jody Brezette '06  
Brian & Janet (Sahn) '06 Easter  
Matt '04 & Anne (Hurrle) '06 Homan

Matt '06 & Claire (Breen) '05 Lubbers  
David Schnieders '06

## CLASS OF '07

Colin McSharar '07

## CLASS OF '08

Courtney Forestal '08  
Bill '08 & Ellen (Alerding) '08 Kennedy & Family  
Jimmy '08 and Anna Grace Kennedy  
Bennie & Catherine (Bates) '08 Waters

## CLASS OF '09

Adam & Molly (McGlinchey) Claus '09  
Mallory (Curtin) '09 Kirschner  
Chris Mark '09  
Alex Miller '09  
Kevin '09 & Katie (Bates) '09 O'Brien

## CLASS OF '10

Melissa Smith '10

## CLASS OF '11

Anonymous (1)

## CLASS OF '12

Lauren Taylor '12  
Max Van Vliet '12

## CLASS OF '13

Deegan Atha '13  
Brian Gamache '13  
Mary Stonner '13

## CLASS OF '14

Kyung Jin Lee '14

## CLASS OF '15

Lucy Eisgruber '15  
Mary Claire Fagan '15  
Benjamin Sowinski '15







## CLASS OF '16

Anonymous (2)  
Riley Ferguson '16  
Cecelia Stonner '16

## CLASS OF '17

Collin '17 & Justine Aycock  
Josef Eisgruber '17

## CLASS OF '18

Robert Smith '18

## CLASS OF '19

Oskar Eisgruber '19

## CLASS OF '20

Jack McGillicuddy '20

## CLASS OF '21

Osinachi Osuji '21

## GIFT IN KIND DONORS

A Classic Party Rental  
Bier Brewery  
Engledow Group  
James Babcock Inc.  
Bryon & Christine Konvolinka  
T. Mark King & Christine McConnell-King  
Molly and Myrtle  
Lou Malnati's Pizzeria  
Pepsico  
Republic National Distributing Company  
Sullivan Hardware  
Sun King Brewing Company  
Thiele Heating & Cooling  
Tito's Handmade Vodka  
Zink Distributing

## YOUNG ALUMNI PRESIDENT'S CIRCLE

The Young Alumni President's Circle (YAPC) brings together Bishop Chatard alumni who graduated less than 15 years from the date joining and want to ensure others have the chance to experience the power of a Bishop Chatard education. Member of the Young Alumni President's Circle are among Bishop Chatard's most distinguished supporters.

### CLASS OF '08

Bill '08 & Ellen (Alerding) '08 Kennedy & Family  
Jimmy '08 and Anna Grace Kennedy

### CLASS OF '09

Mallory (Curtin) '09 Kirschner  
Kevin '09 & Katie (Bates) '09 O'Brien

### CLASS OF '10

Melissa Smith '10

### CLASS OF '12

Max Van Vliet '12

### CLASS OF '13

Deegan Atha '13

### CLASS OF '14

Kyung Jin Lee '14

### CLASS OF '15

Lucy Eisgruber '15  
Benjamin Sowinski '15

### CLASS OF '17

Josef Eisgruber '17

### CLASS OF '19

Oskar Eisgruber '19

### CLASS OF '20

Jack McGillicuddy '20

## AVE MARIA LEGACY SOCIETY

We are deeply appreciative to our charter members for their thoughtful generosity which will help to ensure the future strength of Bishop Chatard High School in the years to come. To become a member of the Ave Maria Legacy Society, just let us know in writing that you have included BCHS in your estate plans and provide us with the proper documentation.

Your planned gift to Bishop Chatard can be funded with cash, retirement assets, life insurance, securities, tangible personal property, and real estate. Depending on the type of gift you choose, planned giving can provide tax savings benefits as well as the joy of knowing your gift will benefit Bishop Chatard students for years to come.

Contact Director of Development Margaret Ruffing at [mruffing@BishopChatard.org](mailto:mruffing@BishopChatard.org) or 317-251-1451, ext. 2242, for information or to inform Bishop Chatard of your intention to include the North Deanery high school in your estate plans.

Anonymous (1)  
Dan & Betsy Brunette  
Jim & Kathie Church  
Doug Donahue  
Fritz '77 & Shele (Wruble) '77 French  
Barry & Monica (Ruberg) '04 Helfrich  
John\* & Jan Homan

Alice Mattingly '75  
Eileen (O'Brien) '80 Metzger  
John Scheidler '72  
Edward Snelz '78  
Dave & Ann Taylor  
William Witchger





**BCHS**  
TROJANS  
for *Life*